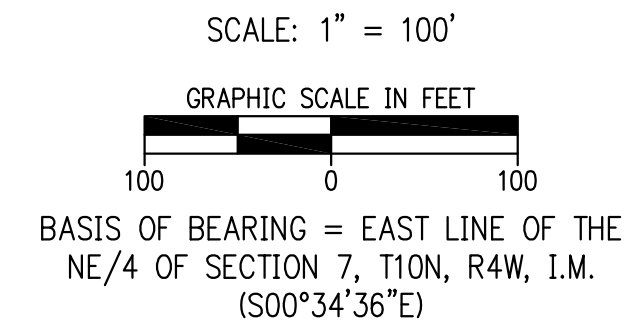
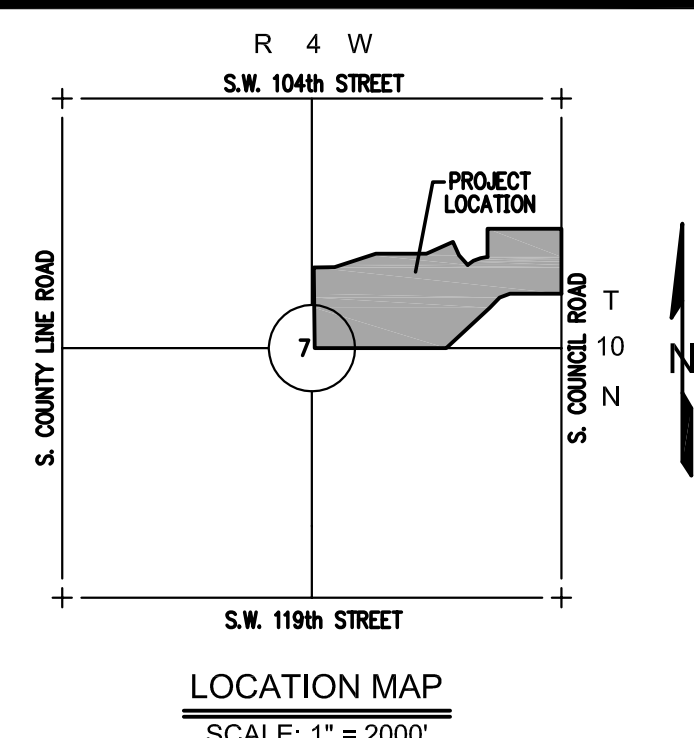
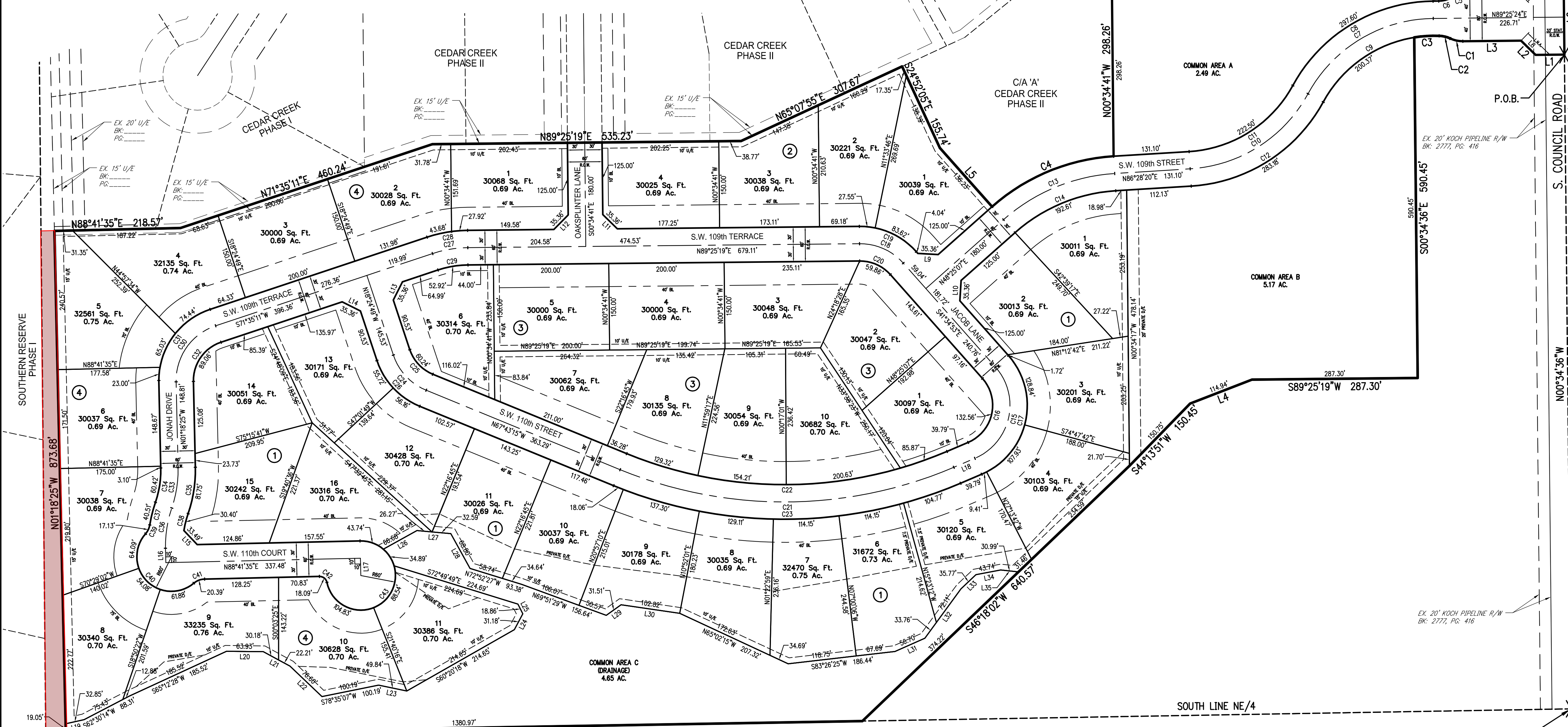


# FINAL PLAT OF KINGSBRIDGE ESTATES

A PART OF THE NE/4 OF SECTION 7, T10N, R4W, I.M.  
OKLAHOMA CITY, CLEVELAND COUNTY, OKLAHOMA



NE CORNER OF NE/4 OF SECTION 7, T10N, R4W, I.M. (FOUND RAILROAD SPIKE)



CURVE TABLE					
CURVE #	LENGTH	RADIUS	DELTA	CHORD DIRECTION	CHORD LENGTH
C1	22.36'	50.00'	025°37'03"	N77°46'04"W	22.17'
C2	20.12'	50.00'	023°03'16"	N78°29'11"W	19.98'
C3	43.30'	220.00'	011°16'34"	S86°20'54"W	43.23'
C4	232.46'	350.00'	038°03'13"	N67°26'44"E	228.21'
C5	22.55'	50.00'	025°50'27"	N76°30'07"E	22.36'
C6	22.55'	50.00'	025°50'31"	N76°30'09"E	22.36'
C7	265.71'	250.00'	060°53'46"	N58°58'28"E	253.38'
C8	297.60'	280.00'	060°53'46"	N58°58'28"E	283.78'
C9	243.67'	220.00'	063°27'36"	N60°15'23"E	231.40'
C10	252.84'	250.00'	057°56'45"	N57°29'58"E	242.20'
C11	222.50'	220.00'	057°56'45"	N57°29'58"E	213.13'
C12	283.18'	280.00'	057°56'45"	N57°29'58"E	271.26'
C13	212.53'	320.00'	038°03'13"	N67°26'44"E	208.65'
C14	192.61'	290.00'	038°03'13"	N67°26'44"E	189.09'
C15	189.37'	100.00'	108°29'57"	S12°40'06"W	162.31'
C16	132.56'	70.00'	108°29'57"	S12°40'06"W	113.62'
C17	246.18'	130.00'	108°29'57"	N12°40'06"E	211.01'
C18	85.52'	100.00'	048°59'48"	S66°04'47"E	82.93'
C19	111.17'	130.00'	048°59'48"	N66°04'47"W	107.81'
C20	59.86'	70.00'	048°59'48"	S66°04'47"E	58.05'
C21	593.78'	750.00'	045°21'41"	S89°35'54"W	578.39'
C22	570.03'	720.00'	045°21'41"	S89°35'54"W	555.26'
C23	617.53'	780.00'	045°21'41"	N89°35'54"E	601.53'
C24	86.26'	100.00'	049°18'26"	N43°04'02"W	83.43'
C25	60.24'	70.00'	049°18'26"	N43°04'02"W	58.40'
C26	111.87'	130.00'	049°18'26"	S43°04'02"E	108.45'
C27	62.26'	200.00'	017°50'08"	N80°30'15"E	62.01'
C28	71.60'	230.00'	017°50'08"	S80°30'15"W	71.31'
C29	52.92'	170.00'	017°50'08"	N80°30'15"E	52.71'
C30	127.22'	100.00'	072°53'36"	N35°08'23"E	118.81'
C31	162.47'	130.00'	071°36'24"	S35°48'12"W	152.10'
C32	89.06'	70.00'	072°53'36"	N35°08'23"E	83.17'
C33	71.08'	200.00'	020°21'51"	N08°52'31"E	70.71'
C34	60.42'	170.00'	020°21'51"	S08°52'31"W	60.10'
C35	81.75'	230.00'	020°21'51"	N08°52'31"E	81.32'
C36	71.08'	200.00'	020°21'51"	N08°52'31"E	70.71'
C37	40.51'	230.00'	010°05'27"	S14°00'42"W	40.46'
C38	30.40'	170.00'	010°14'43"	N13°56'05"E	30.36'
C39	17.13'	30.00'	032°43'03"	S25°19'30"W	16.90'
C40	180.05'	60.00'	171°55'59"	S44°16'58"E	119.70'
C41	20.39'	30.00'	038°56'33"	N69°13'19"E	20.00'
C42	18.09'	13.00'	079°44'30"	S51°26'10"E	16.67'
C43	272.00'	60.00'	259°44'31"	N38°33'51"E	92.10'

**NOTES**

- THIS PLAT OF SURVEY MEETS THE OKLAHOMA MINIMUM STANDARDS FOR THE PRACTICE OF LAND SURVEYING AS ADOPTED BY THE OKLAHOMA STATE BOARD OF REGISTRATION FOR PROFESSIONAL ENGINEERS AND LAND SURVEYORS, AND THAT SAID FINAL PLAT COMPLIES WITH THE REQUIREMENTS OF TITLE 11 SECTION 41-108 OF THE OKLAHOMA STATE STATUTES.
- CENTERLINE OF RIGHT-OF-WAY MONUMENTS SHALL BE AS FOLLOWS:  
MAGNETIC NAIL WITH WASHER STAMPED "CTA CA973" FOR ASPHALT PAVING
- PROPERTY CORNER MONUMENTS SHALL BE:  
3/8" IRON RODS WITH A PLASTIC CAP STAMPED "CTA CA973"
- MAINTENANCE OF COMMON AREAS, PRIVATE DRAINAGE EASEMENTS, AND ISLAND/MEDIANS WITHIN STREET RIGHT-OF-WAY IS THE RESPONSIBILITY OF THE PROPERTY OWNERS AND/OR PROPERTY OWNERS ASSOCIATION. NO STRUCTURES, STORAGE OF MATERIAL, GRADING, FILL OR OTHER OBSTRUCTIONS, INCLUDING FENCES, EITHER TEMPORARY OR PERMANENT, SHALL BE PLACED WITHIN DRAINAGE RELATED COMMON AREAS OR DRAINAGE EASEMENTS.

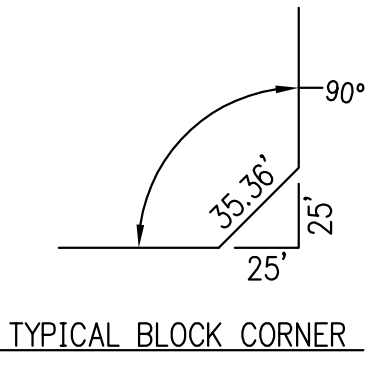
LEGEND	
BL	BUILDING LIMIT LINE
D/E	DRAINAGE EASEMENT
EX.	EXISTING
L.N.A.	LIMITS OF NO ACCESS
(NR)	NONRADIAL LINE
P.O.B.	POINT OF BEGINNING
R.O.W.	RIGHT-OF-WAY
U/E	UTILITY EASEMENT
TO ESMT.	(DISTANCE) TO EASEMENT

LINE TABLE		
LINE #	LENGTH	DIRECTION
L1	50.00'	S89°25'19"W
L2	35.36'	N45°34'36"W
L3	100.83'	S89°25'24"W
L4	114.94'	S68°50'24"W
L5	136.23'	S41°34'41"E
L6	130.00'	S00°34'36"E
L7	35.36'	N44°25'22"E
L8	35.36'	S45°34'36"E
L9	35.36'	N86°34'53"W
L10	35.36'	S03°25'07"W
L11	35.36'	N45°34'41"W
L12	35.36'	S44°25'19"W

LINE TABLE		
LINE #	LENGTH	DIRECTION
L13	35.36'	N26°35'11"E
L14	35.36'	S63°24'49"E
L15	33.49'	N43°21'21"W
L16	25.00'	N01°18'25"W
L17	30.00'	N01°18'25"W
L18	39.79'	S66°55'04"W
L19	32.85'	S77°27'52"W
L20	63.93'	N89°20'20"W
L21	52.39'	N61°27'18"W
L22	76.60'	N46°26'38"W
L23	49.84'	N78°15'41"W
L24	31.18'	S28°01'56"W

LINE TABLE		
LINE #	LENGTH	DIRECTION
L25	18.86'	S26°34'21"E
L26	66.68'	S61°07'11"W
L27	58.86'	N84°49'00"W
L28	68.80'	N28°54'07"W
L29	31.51'	S54°11'28"W
L30	102.82'	N81°42'36"W
L31	56.70'	S68°05'02"W
L32	105.86'	S36°09'57"W
L33	35.77'	S46°30'20"W
L34	43.74'	S79°11'36"W
L35	30.99'	N83°49'32"W

POINT OF COMMENCEMENT  
SE CORNER OF NE/4 OF SECTION 7, T10N, R4W, I.M. (FOUND RAILROAD SPIKE)



**FINAL PLAT TO SERVE  
KINGSBRIDGE ESTATES**

214 E. Main  
Oklahoma City, Oklahoma 73104

**Crafton Tull**

architecture | engineering | surveying

405.787.6270 | 405.787.6271  
www.craftontull.com

SHEET NO.: 2 OF 2  
DATE: 06/03/2016  
PROJECT NO.: 16605400

PD-

DRAWING: C:\USERS\ADMINISTRATOR\DESKTOP\KINGSBRIDGE\KINGSBRIDGE\_FINAL\_PLAT.dwg